

A newsletter from East View highlighting census data from around the world

MOBILE PHONE USAGE COMES WITH CHALLENGES

The spread and adoption of mobile phones around the world has brought many positives as well as drawbacks for both governments and people. Cell phones act as conduits for individuals that provide easy access to information such as the news or educational resources. Small businesses and entrepreneurs benefit from the reach granted by mobile phones, encouraging economic growth and employment opportunities. However, the pervasiveness of mobile technology has either created new or made existing challenges worse. Disparities in access to mobile technology has broadened the information gap between urban and rural areas.

A more Internet-connected population has brought challenges regarding privacy as governments such as those in Myanmar use technology to track its citizens. Many societies today, such as in Peru, are worried about the relationship between increased screen-time for adolescents and their educational outcomes.

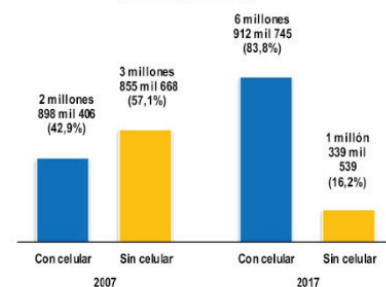
Finding Data on the Global Census Archive

It has never been easier to discover census data across multiple countries and in numerous languages. With the **Global Census Archive**® (GCA), the "Search the Archive" bar allows a researcher to use one simple search term that is applied to millions of pages in an instant. In this case, the search term "mobile phone" is applied globally, and then thousands of search results can be easily filtered to just include one country such as Myanmar, where English publications are available on the platform for their 2014 census.

Additionally, a researcher interested in Peru who know Spanish is able to harness the power of "Search the Archive" by entering "*celular OR teléfono*" to return thousands of results for both words using the platform's built-in Boolean operators. To refine the search results even further to only focus on mobile phone usage, this same researcher can then filter the results to only include documents that occur in the 2010 census round or later.

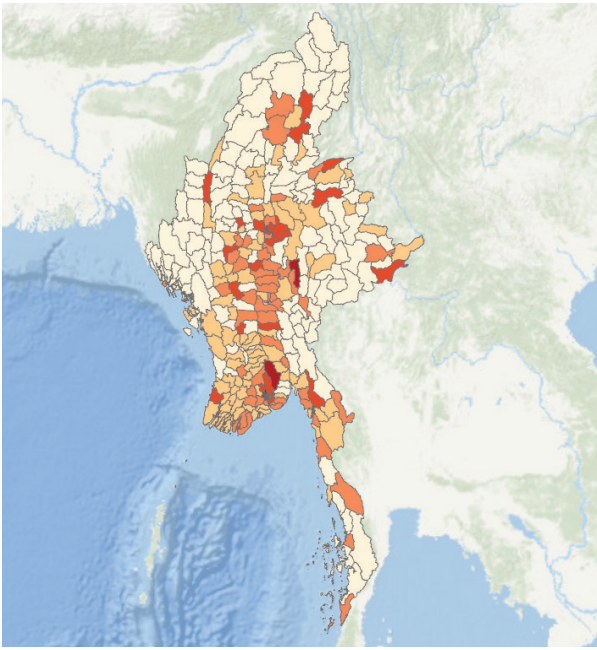
Read on below for more information on data discovery via GCA.

GRÁFICO N° VII.6
PERÚ: HOGARES SEGÚN CONDICIÓN DE TENENCIA DE TELÉFONO CELULAR, 2007 Y 2017
(Absoluto y porcentaje)



Fuente: INEI - Censos Nacionales de Población y Vivienda 2007 y 2017.

From the Peru: Sociodemographic Profile: National Report 2017: Table displaying cell phone ownership in Peru for households in both 2007 and 2017. Perú: perfil sociodemográfico : informe nacional : censos nacionales 2017: XII de población, VII de vivienda y III de comunidades indígenas. First Publishing Date: 2018.



From the Myanmar 2014 Population Census: Vector data visualized in GIS software from the Myanmar 2014 GIS dataset available on the GCA platform showing the number of households with cell phones. Myanmar Department of Population, Ministry of Immigration and Population. *Myanmar 2014 Census*. Created by East View Geospatial, Inc.: 2023.

How Is Census Data Presented in Global Census Archive?

The Global Census Archive enables researchers to easily find census data to make comparisons between places, time, and people using one interface on one platform. With such a large database consisting of hundreds of censuses, the materials presented for each census will vary.

In the case of the Myanmar 2014 census, there are over 300 individual publications at the township level. These official results detail mobile phone availability for each township as well as delineating between urban and rural areas. Furthermore, for researchers more spatially inclined, there is a companion GIS dataset for this same census that allows for immediate and customizable visualization of vector data in GIS software.*

In the Peru 2017 census, publications detail how mobile phone usage has increased substantially from 2007 to 2017. Charts, text, and tables from the Peruvian authorities all display the same official census data detailing the availability of mobile phones at the provincial level.

**Please note that GIS datasets on the GCA platform must be purchased separately.*

Further reading on mobile phone usage in Myanmar, Peru, and beyond:

- **Mobile Connectivity in Emerging Economies**
<https://www.pewresearch.org/internet/2019/03/07/mobile-connectivity-in-emerging-economies/>
- **Smartphones Bring Happiness And Headaches To Myanmar**
<https://www.npr.org/sections/goatsandsoda/2015/09/14/424701548/smartphones-bring-happiness-and-headaches-to-myanmar>
- **Junta threatens prison terms for unregistered SIM card users**
<https://www.rfa.org/english/news/myanmar/myanmar-sim-cards-09272023045517.html>
- **El 91,3% de la población de 6 y más años de edad que usa internet accedió a través de un teléfono celular**
<https://m.inei.gov.pe/media/MenuRecursivo/noticias/nota-de-prensa-no-098-2023-inei.pdf>
- **Aumenta la preocupación por el bienestar de los niños, niñas y adolescentes ante el incremento del tiempo que pasan frente a las pantallas**
<https://www.unicef.org/peru/comunicados-prensa/preocupaci%C3%B3n-bienestar-ninos-ninas-adolescentes-tiemp-frente-pantalla-internet-seguro>



The East View **Global Census Archive**® (GCA) is an innovative program to collect official data and publications issued by the national census authorities of more than 175 countries, from the early 19th century to the present day, providing a key resource for scholars and analysts to find current and historical census data to support critical research into our changing world. GCA provides a single platform experience to explore the world's census publications: all countries and regions, the complete depth of published census materials, including original census publications in e-book form, as well as modern tabular data in Excel format and GIS files for advanced users.