

**More than numbers.** Census data provides unparalleled insight into the lives of individuals. East View presents the Panamá 2010 Census as part of the East View Global Census Archive® (GCA). The Panamá 2010 Census addresses a wide range of topics at the highest level of detail possible.

**Making information available.** When initially acquired, the census data is stored in a complex database structure, with attribute descriptions in English and Spanish, limiting access to those with significant database management and programming experience. East View simplifies access, formatting the collection into an easy-to-use geodatabase which can be visualized using any GIS software and providing a comprehensive guide. Additionally, East View provides the original census documentation, allowing researchers to see first-hand how the data was gathered.

**Note:** The Panama 2000 Census (GIS Edition) is also available through GCA

## CENSUS OVERVIEW

<b>Year:</b> 2010	<b>Polygons at ADM:</b> 13,124
<b>Population Coverage %:</b> 30.5	<b>Number of Questions:</b> 46
<b>Geography Coverage %:</b> 0.3	<b>Number of Answers:</b> 1,188
<b>Smallest Geography Name:</b> Barrios Urbanos	<b>Data Points:</b> 15,591,312
<b>ADM Level:</b> 5	<b>Urban/FG:</b> Urban

### Notes

- Population Coverage % indicates the percentage of total population of the country during the census year that this census covers
- Geography Coverage % indicates the percentage of the total area of the country covered by the ADM polygons in this census
- Urban/FG indicates if this census provides Full Geographic (FG) coverage or if coverage is limited to Urban (U) or populated places

## DELIVERABLES

The Panamá 2010 Census has 30.5% population coverage, over 15 million data points, and consists of:

### Geodatabase

- Intuitive organization of census data
- Administrative boundary vector data at ADM 5 (Barrios Urbanos) for 13,124 census units
- Vector and aggregated tabular data at the Barrios Urbanos level

### Shapefiles

- All vector and census data in ESRI Shapefile format

### Census Guide

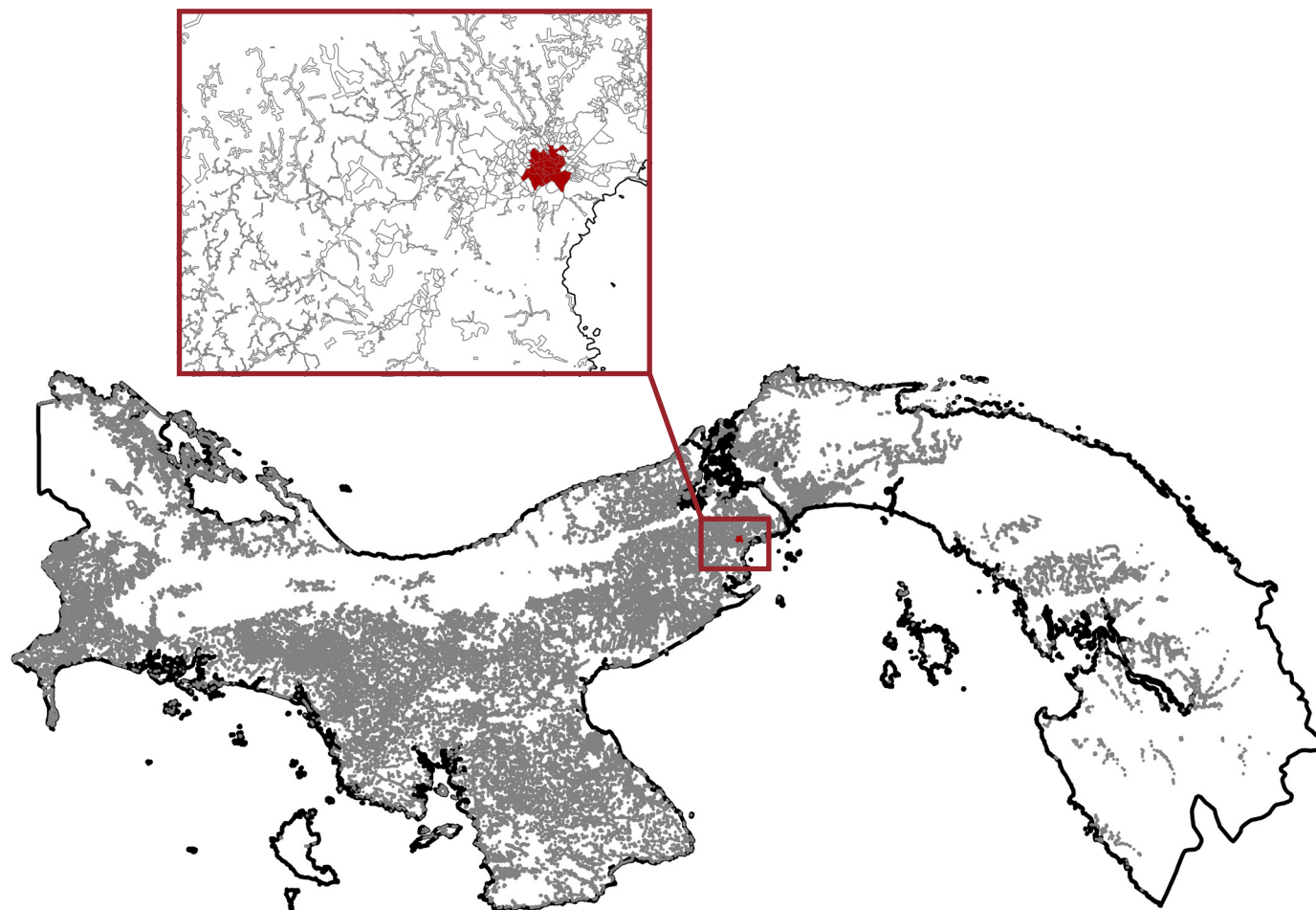
- Detailed descriptions for 1,188 census variables

### Original Census Documentation and Database

- Delivered in native format
- Census questionnaires

### Metadata

- Full attribute level metadata in FGDC ISO format



ADM 5/0 boundaries for all of Panamá; inset detail over Chorrera with area in red available as sample data

## CENSUS QUESTIONS

Below is a representative sample of census questions included in the Panamá 2010 Census:

### 1. Demographic

Relationship / Sex / Marital status

### 2. Migration

Year of arrival / Relationship of duration of residence to year of arrival

### 3. Social

Literacy / School attendance / Ethnicity and indigenous peoples / Disability

### 4. Economic

Activity status / Occupation / Status in employment / Income / Institutional sector / Employment in informal sector / Place of work

### 5. Housing

Living quarters / Location of living quarters / Occupancy status / Ownership / Rooms / Bedrooms / Water supply system / Drinking water / Toilet / Sewage disposal / Bathing facilities /

Kitchen / Fuel used for cooking / Lighting and/or electricity / Solid waste disposal / Heating / Hot water / Piped gas / Use of housing unit / Occupancy by one or more households / Number of occupants / Building type / Year or period of construction / Dwellings in the building / Construction material of outer walls / Construction material of floor, roof / State of repair / Information and communications technology devices / Cars / Durable household appliances

**For more information about the Panamá 2010 Census, including the availability of corresponding non-GIS materials (published results, supporting questionnaires, other census ephemera, etc.), please contact [info@eastview.com](mailto:info@eastview.com)**