

Introducing MapVault®

A new subscription
service that brings
thousands of
authoritative
map series together
in one experience



geospatial.com

A large, detailed topographic map of South America, showing the continent's terrain with color-coded elevations (greens for lower elevations, yellows and oranges for mid-elevations, and reds for higher elevations). The map is overlaid with a light blue grid. The word "MapVault" is superimposed in large white letters with a blue outline across the center of the map.

MapVault®






Many Choices — One Source

East View Geospatial

Offices and Partners

Headquarters	Minneapolis, MN USA
Africa	Johannesburg, South Africa
Asia	Beijing, China Tokyo, Japan Taipei, Taiwan
Europe	Berlin, Germany
Latin America	Bogota, Colombia

Contact

web	geospatial.com
email	geospatial@eastview.com
tel.	+1.952.252.1205
fax	+1.952.252.1202
	@EVGeospatial
	/EVGeospatial
	East View Geospatial

Contents

Get to Know MapVault Your portal to a world of mapping	4	Enhance Add value to your projects with MapVault's authoritative data	12
Explore MapVault's coverage spans the globe with topographic, nautical, aeronautical and geological map series	6	Subscribe Make MapVault work for you— subscribe to single map series or customized packages of related series	14
Create Cultivate an environment ripe for discovery with MapVault's intuitive platform and robust metadata	8	Learn More FAQs and other important information about MapVault	16
Access MapVault's data can be accessed via any WMTS client and is easily integrated into GIS software	10	Let's Get Started Ready to give MapVault a try? Request a free trial or try out the MapVault demo site	18

Get to know MapVault®

MapVault is a dynamic, affordable, subscription-based service that brings thousands of authoritative map series together in one experience. This unparalleled streaming service delivers immediate access to East View Geospatial's extensive raster map collection—the world's most comprehensive commercially-owned geospatial library.

With MapVault, the discovery and analysis of map content is made profoundly easier than the traditional struggle with paper maps or individually digitized map sheets. Customize MapVault to include map series covering your exact areas of interest, or contact us about adding your own resources to the platform.



MapVault provides access to 500,000+ georeferenced map sheets in over 1,000 authoritative map series—without the costs of procuring, storing and digitizing physical maps

Explore the world with MapVault

All scales. All languages. All countries.

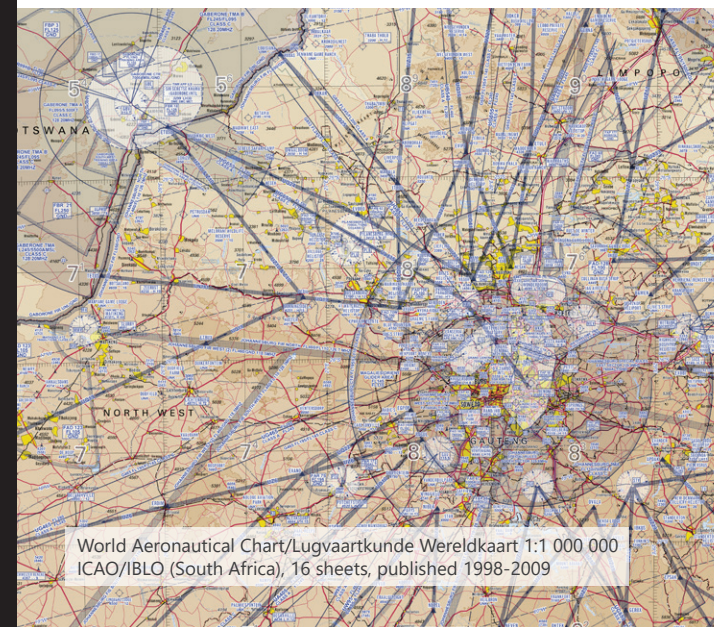
MapVault delivers quick and easy access to the world's map series.

Current and historical. Federal government, local government, military and commercially published. MapVault has it all. Subscribe to single map series or large packages of related series.

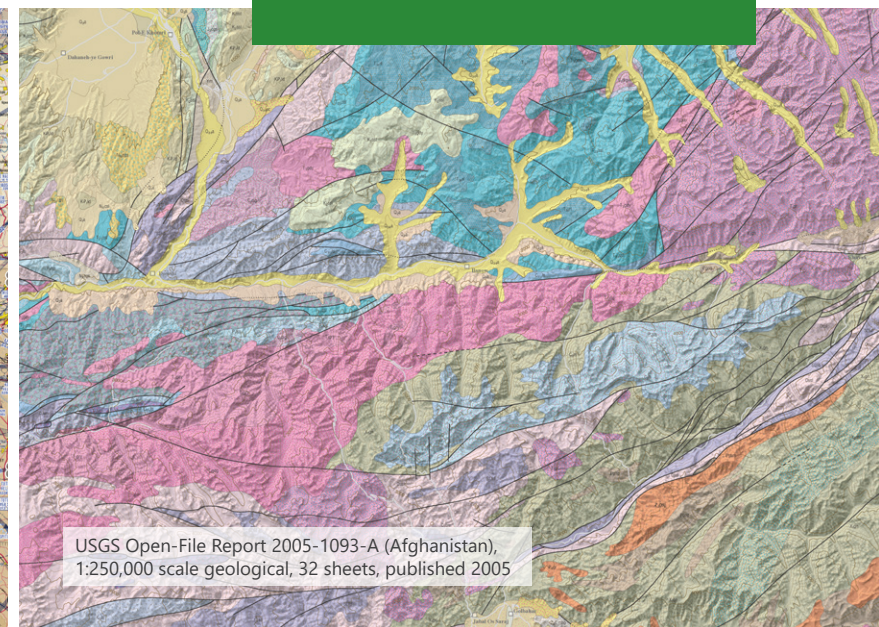
New map series are added on a regular basis to MapVault—visit geospatial.com/products/web-services for the latest list of current and forthcoming map series.



NZTopo50 (New Zealand), 464 sheets, published 2009-2017



World Aeronautical Chart/Lugvaartkunde Wereldkaart 1:1 000 000 ICAO/IBLO (South Africa), 16 sheets, published 1998-2009



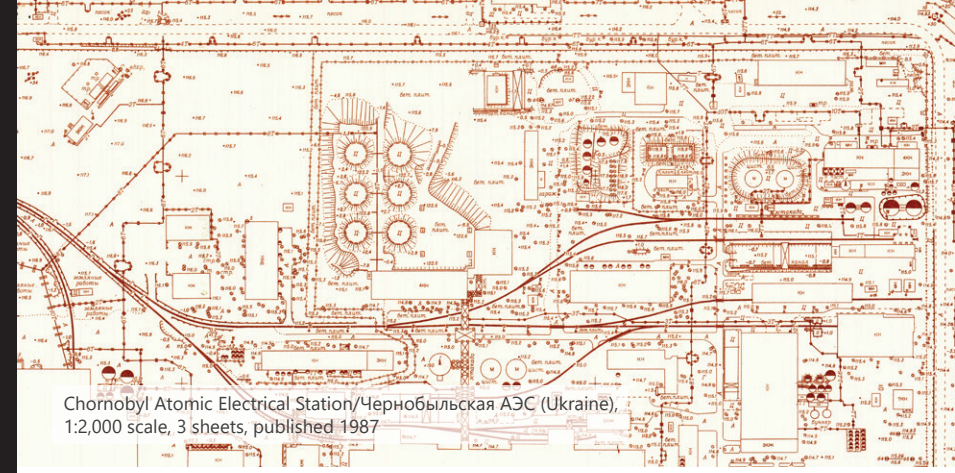
USGS Open-File Report 2005-1093-A (Afghanistan), 1:250,000 scale geological, 32 sheets, published 2005

MapVault features topographic, nautical, aeronautical and geological map series from all over the world

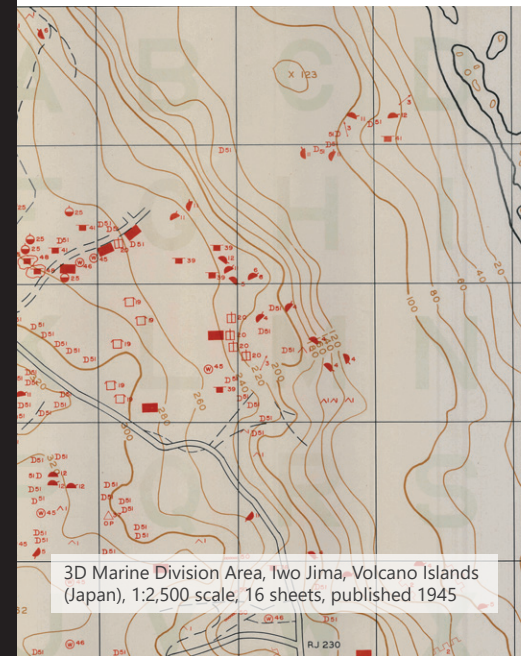
Create an environment ripe for discovery

With MapVault, we've taken the time and cost out of creating a fast, easy and accessible environment for users to discover and utilize maps. Robust metadata, including individual sheet-level metadata, makes finding the right maps a breeze, while the seamlessly mosaicked tilesets provide users with an experience they're familiar with—being able to easily drag and zoom maps without pesky loading delays or loss of resolution.

Use MapVault to study significant historical locations. Explore your own backyard, or the farthest reaches of the planet—anything is possible.



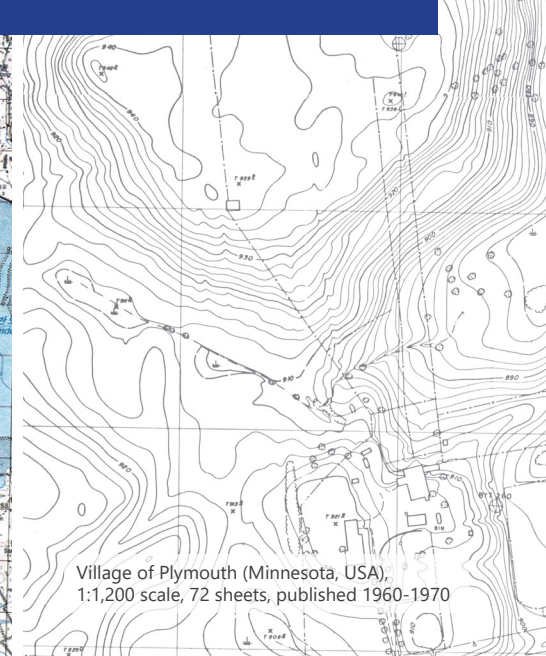
Chornobyl Atomic Electrical Station/Чернобыльская АЭС (Ukraine),
1:2,000 scale, 3 sheets, published 1987



3D Marine Division Area, Izu Islands, Japan, 1:2,500 scale, 16 sheets, published 1945



Series 240/일련 번호 240 (North Korea),
1:50,000 scale, 400 sheets, published 1978-1991



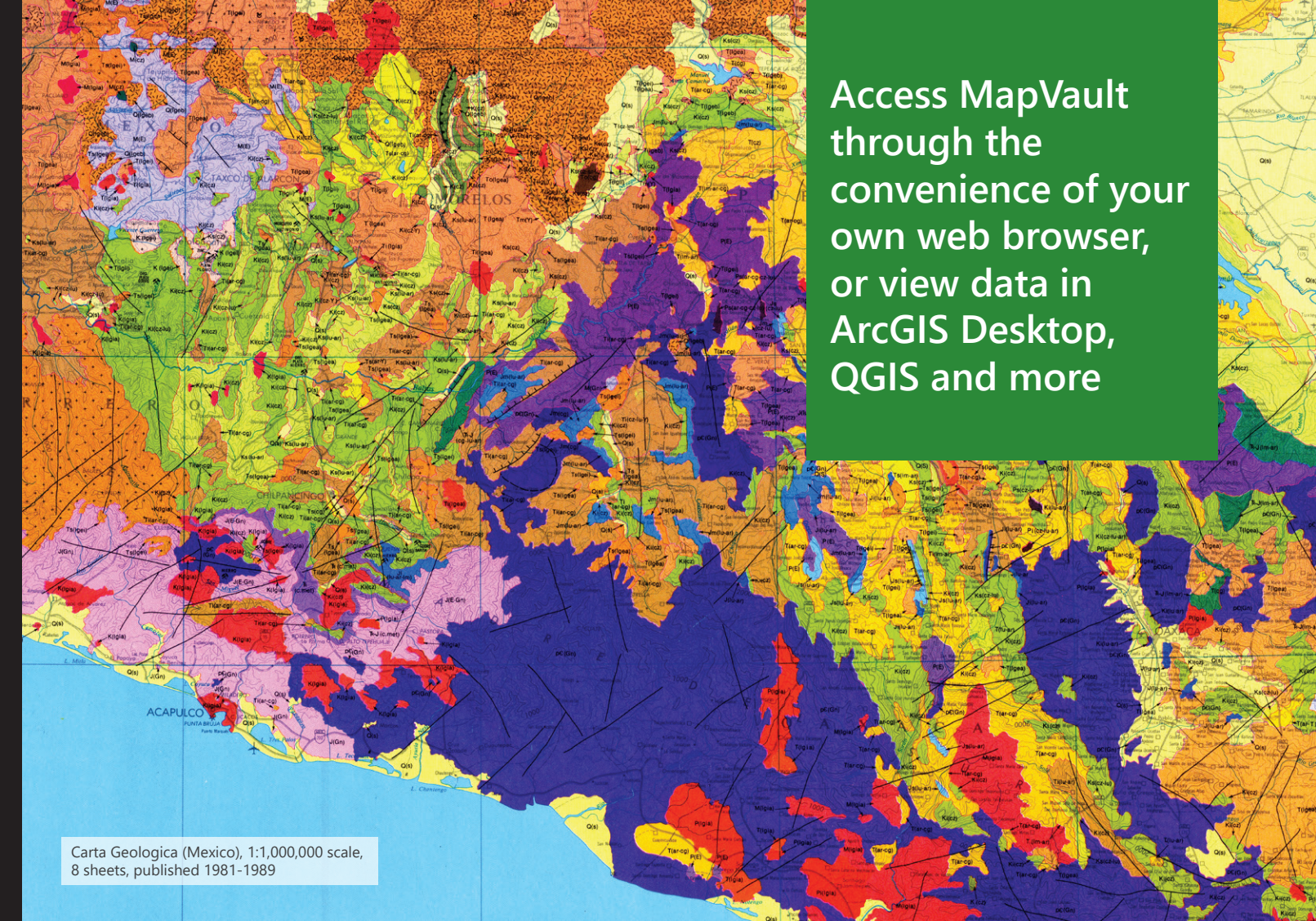
Village of Plymouth (Minnesota, USA),
1:1,200 scale, 72 sheets, published 1960-1970

MapVault's intuitive platform lets users search, browse and view map series all in one convenient interface

Access map data anytime, anywhere

MapVault data is easily integrated into GIS software. Access the MapVault catalog over the internet or through any WMTS (web mapping tile services) connection, or download layer files formatted specifically for ArcGIS Desktop, QGIS, Global Mapper or other open-source GIS packages.

MapVault delivers the data you need—every map series is accompanied by an index map and fully attributed metadata formatted to ISO record specifications. Sheet-level metadata is provided for individual map sheets within series, including sheet name, number and publication date.

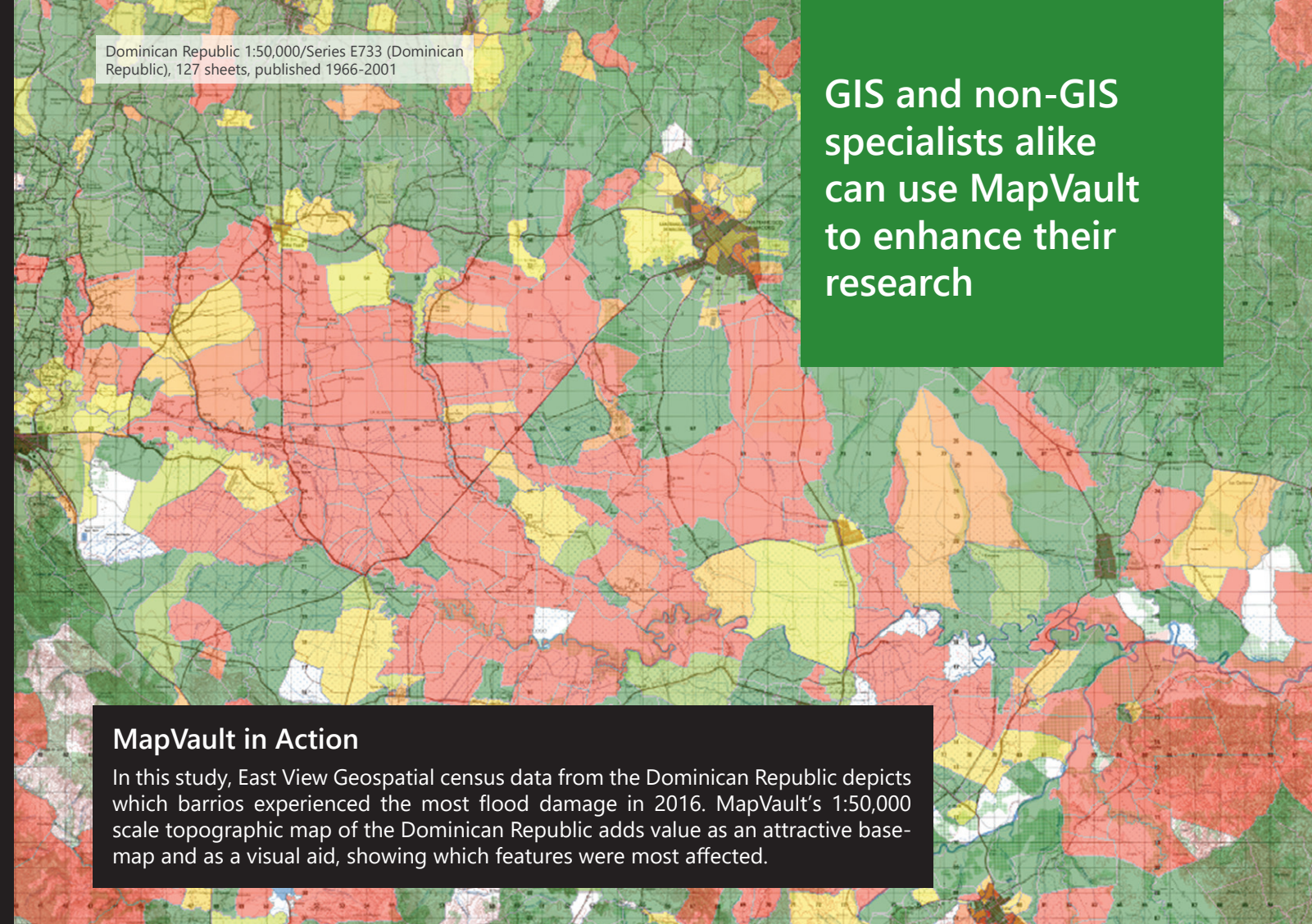


Access MapVault through the convenience of your own web browser, or view data in ArcGIS Desktop, QGIS and more

Enhance your work with reliable, authoritative data

Take your project to the next level with MapVault. Ready-to-use map tilesets let you focus on analysis, not on production. Our geospatial experts have done the hard work for you by taking exotic and historical map series in obscure datums and projections and georeferencing and re-projecting them to the standard Web Mercator projection, ensuring that the maps you need will align with current geospatial inputs, such as aerial and satellite imagery, population data, and more.

Use MapVault's tilesets to enhance your presentations and publications with striking visuals that also add explanatory value. Whether showing the area of your research, highlighting regions affected by a crisis, or projecting where future development may occur, MapVault's authoritative map series are a valuable resource for effectively communicating your message.



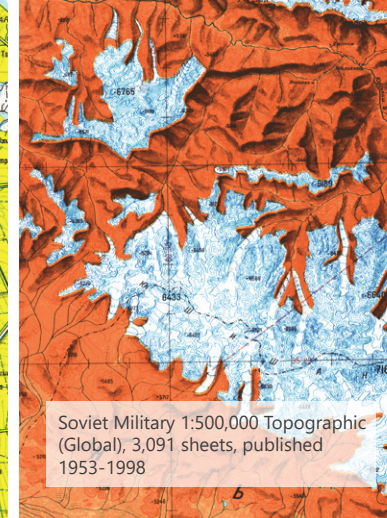
Subscribe to MapVault

Tiered pricing makes subscribing affordable, while premium package options and regional, thematic and single map series sets let you customize MapVault to suit your specific needs.

For the latest title lists visit geospatial.com/products/web-services.
Or contact MapVault@eastview.com today for a customized quote.



Carte topographique au 1:50,000
(Madagascar), 162 sheets, published
1955-1988



Soviet Military 1:500,000 Topographic
(Global), 3,091 sheets, published
1953-1998

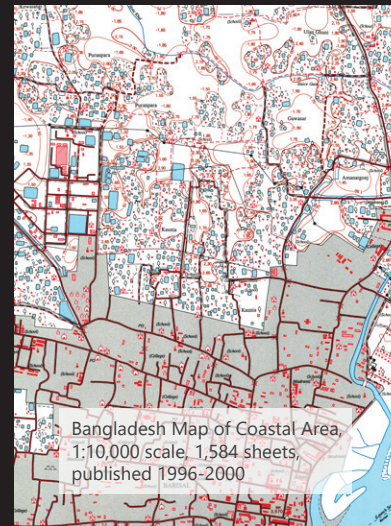


Jamaica 1:50,000 (Metric Edition),
20 sheets, published 1982-1991

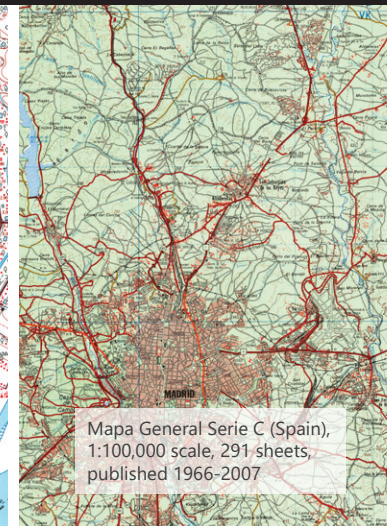


Topographic Map Indonesia/Peta
Rupabumi Indonesia (East Timor),
119 sheets, published 1993-2001

More From MapVault: Featured Map Series



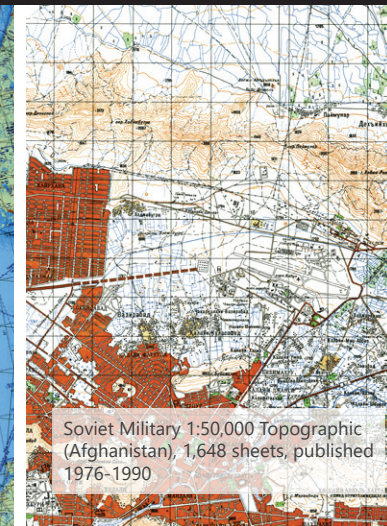
Bangladesh Map of Coastal Area,
1:10,000 scale, 1,584 sheets,
published 1996-2000



Mapa General Serie C (Spain),
1:100,000 scale, 291 sheets,
published 1966-2007



Jet Navigation Chart (Global),
1:2,000,000 scale, 120 sheets,
published 1971-1999



Soviet Military 1:50,000 Topographic
(Afghanistan), 1,648 sheets, published
1976-1990

Learn More FAQs

What are the licensing and subscription terms for MapVault?

MapVault is sold as a subscription in a variety of package options, allowing users and organizations to choose a plan that fits their specific needs. Contact MapVault@eastview.com for a customized quote.

How do I access MapVault?

Users can access MapVault over the internet through a URL (apps.geospatial.com/MapVault) or a WMTS connection. Individual map series can be accessed through the MapVault platform or via an ESRI Layer File or QGIS Layer File.

What happens if I cancel my subscription to MapVault?

Should you choose to cancel your MapVault subscription, you will continue to have access for the remainder of your paid subscription period, after which time access will be terminated.

Who do I contact for questions or technical assistance regarding MapVault?

Submit any questions, comments or technical issues regarding MapVault to MapVault@eastview.com and a customer service representative will respond in a prompt fashion. You may also reach customer service at +1.952.252.1205.

Is there a user guide for MapVault?

Yes. A MapVault user guide is available under the “Help” section of the MapVault platform, or at geospatial.com/products/web-services.

How often is new content added to MapVault? Do I have to pay more to access new content?

New maps are uploaded to MapVault on a regular basis. If new content is added to the package(s) to which you subscribe, you will have access to this content without any additional cost.

Can I add my institution’s own data to MapVault?

Yes. Let us know what you need on the platform—we may already have it available or in production. And if not, we have a solution to rapidly make it available to you.

Can I host my MapVault data locally?

Yes. Contact MapVault@eastview.com for details. Note that tiled data sets can be rather large and numerous such sets quickly leads to storage requirements of many terabytes. But if your organization requires this for preservation or security reasons, we can help you.

More questions?
Contact us at
MapVault@
eastview.com

Does MapVault provide metadata for its content? What about individual map sheets?

Yes. An ISO record is available for every map series to download in XML format. In general, sheet publication dates, sheet names and sheet numbers are available for all individual map sheets in an on-screen, real-time mode by enabling the “Show Sheets” feature.

How do I cite MapVault data in my paper or presentation?

Each map series has a permanent URL and is accompanied by an MLA and APA citation, allowing users to quickly and accurately cite MapVault data.

Let's Get Started

Request a free trial to MapVault!

Trial requests are evaluated on a case-by-case basis. To help you make the most of your free trial to MapVault, East View Geospatial provides the following:

- Detailed description of MapVault for your website or online catalog
- Access to MapVault user guide
- Usage statistics for the trial period (by request)
- Optional integrated survey for users to complete

Contact us to start your free trial today:

email	geospatial@eastview.com
tel.	+1.952.252.1205
fax	+1.952.252.1202

Or visit geospatial.com/products/web-services to try out the free MapVault demo site.

Our Story



Many Choices — One Source East View Geospatial

East View Geospatial (EVG) is a leading provider of authoritative geospatial data and GIS production services and solutions.

Since the early 1990s, EVG has acquired and built a vast archive of global maps and geospatial data, including topographic maps, raster and vector datasets, elevation models, remote sensing imagery, geological maps, nautical charts, atlases and books. EVG's current collection stands at over 300,000 print items and over two million digital assets.

The company's extensive supplier network allows quick access to products not in inventory. In fact, EVG has more geospatial content partners for vending maps and geodata than any other commercial entity in the world.

In addition to authoritative source material, EVG provides high-quality and cost-effective mapping and GIS services and solutions. EVG produces new geospatial products for a very diverse international corporate, governmental and academic market.