

More than numbers. Census data provides unparalleled insight into the lives of individuals. East View presents the Brazil 2010 Census as part of the East View Global Census Archive® (GCA). The Brazil 2010 Census addresses a wide range of topics at the highest level of detail possible. Available for purchase, this is the premier source of demographic data for academic research.

Making information available. When initially acquired, the census data is stored in a complex database structure, with attribute descriptions in Portuguese, limiting access to those with significant database management and programming experience. East View simplifies access, formatting the collection into an easy-to-use geodatabase which can be visualized using any GIS software and providing a comprehensive guide. Additionally, East View provides the original census documentation, allowing researchers to see first-hand how the data was gathered.

CENSUS OVERVIEW

Year: 2010

Population Coverage %: 79.1

Geography Coverage %: 95

Smallest Geography Name: Setores Censitários

ADM Level: 6

Polygons at ADM: 316,570

Number of Questions: 6

Number of Answers: 4,190

Data Points: 1,326,428,300

Urban/FG: FG

Notes

- Population Coverage % indicates the percentage of total population of the country during the census year that this census covers
- Geography Coverage % indicates the percentage of the total area of the country covered by the ADM polygons in this census
- Urban/FG indicates if this census provides Full Geographic (FG) coverage or if coverage is limited to Urban (U) or populated places

DELIVERABLES

The Brazil 2010 Census has 79.1% population coverage, over a billion data points, and consists of:

Geodatabase

- Intuitive organization of census data
- Administrative boundary vector data at ADM 6 (Setores Censitários) for 316,570 census units
- Vector and aggregated tabular data at the Country and Setores Censitários levels

Shapefiles

- All vector and census data in ESRI Shapefile format

Census Guide

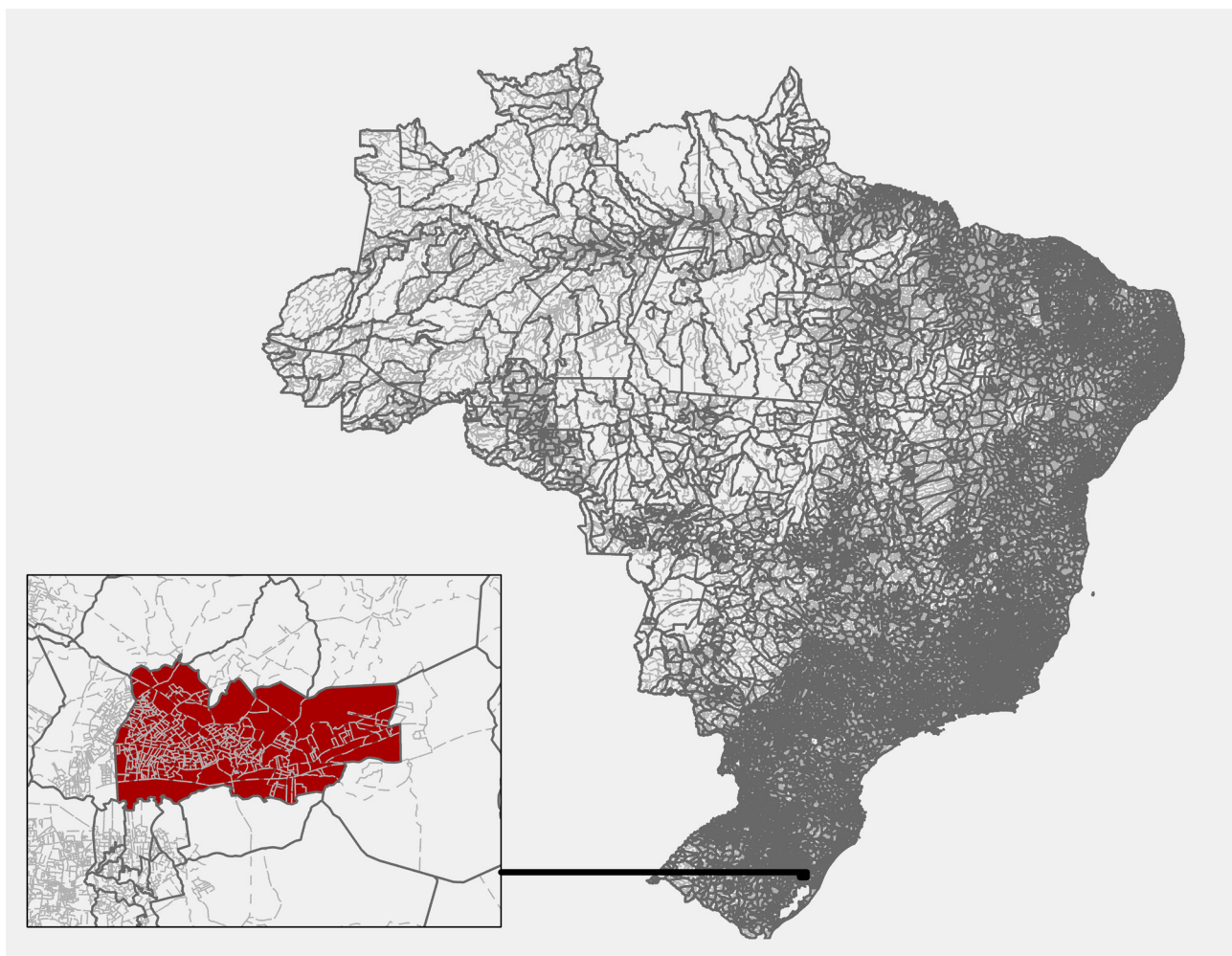
- Detailed descriptions for 4,190 census variables

Original Census Documentation and Database

- Delivered in native format
- Census questionnaires

Metadata

- Full attribute level metadata in FGDC ISO format



ADM 6/3/0 boundaries for all of Brazil; Inset: detail over Gravataí Municipality (area in red included in sample)

CENSUS QUESTIONS

Below is a representative sample of census questions included in the Brazil 2010 Census:

1. Demographic

Relationship / Sex / Birth data and age / Marital status / Fertility

2. Social

Literacy / Ethnicity and indigenous peoples

3. Economic

Income

4. Housing

Living quarters / Occupancy status / Ownership / Rooms / Bedrooms / Useful floor space / Water supply system / Drinking water / Toilet / Sewage disposal / Bathing facilities / Kitchen / Fuel used for cooking / Lighting and/or electricity / Solid waste disposal / Heating / Hot water / Piped gas / Use of housing unit / Occupancy by one or more households / Number of occupants / Building type / Dwellings in the building / Con-

struction material of outer walls / Construction material of floor, roof / State of repair / Characteristics of head or other reference member of household / Tenure / Rental and owner-occupant housing costs / Furnished or unfurnished / Outdoor space

For more information about the Brazil 2010 Census, including the availability of corresponding non-GIS materials (published results, supporting questionnaires, other census ephemera, etc.), please contact info@eastview.com